



West Central Electric Cooperative

June 2022

A Touchstone Energy® Cooperative 

ElectricNews

Youth Tour & CYCLE

Delegates will travel for first time since 2019 pre-Covid
Page 3




PAGE 4
WCE allocates capital credits for 2021. Find out how to figure what goes into your capital credits allocation account


PAGES 4-5
Round Up Foundation funds six area community projects in latest round of grant distributions

PAGES 7-8
Co-op recognizes area students named John & Kathryn English scholars, WCE Scholarship winners

As the weather warms, you will be outside more. Take precautions when storms approach!

Lighting can strike
10 miles
from where it is raining



 Safe Electricity.org

research collected from the National Oceanic and Atmospheric Administration

West Central Electric Cooperative, Inc.

Headquarters:

7867 S. Highway 13, P.O. Box 452, Higginsville, MO 64037
816-565-4942 or 1-800-491-3803 • PAY BY PHONE: 1-855-874-5349

To report outages 24/7:

Call 816-565-4942 or 1-800-491-3803 • or report outages at www.westcentralelectric.coop under "View & Report Outages"

District office:

506 N. Broadway, Oak Grove, MO 64075

Website:

www.westcentralelectric.coop

General Manager:

Mike Gray

Board of Directors:

Densil Allen, Jr. *President*; Clark Bredehoeft, *Vice-Pres.*; Dale Jarman, *Treasurer*; Robert Simmons, *Secretary*; Stan Rhodes, *Asst. Sect.*; Richard Strobel, *Director*; Sandra Streit, *Director*; Jeremy Ahmann, *Director*; Donald Fore, *Director*

This institution is an equal opportunity provider and employer.

ON THE COVER: Caton Brown, Jacob Bacus and Shayla Joseph are named WCE's delegates for the 2022 Rural Electric Youth Tour to Washington, D.C. They will travel to the nation's capital in June along with more than 100 delegates from other Missouri cooperatives.

You like us better than social media?

Thanks!



our score

87

their score*

70

Many people admit to being consumed by their social accounts. So we were pleased to hear you ranked us higher than the average social media* in our latest member survey! Thanks from all of our staff.

*Scores from the 2021 American Customer Satisfaction Index (ACSI) survey of customers rating their satisfaction with social media.



West Central Electric Cooperative, Inc.

A Touchstone Energy Cooperative

7867 S. Hwy 13 • Higginsville, MO 64037 • (816) 565-4942 • westcentralelectric.coop



www.MembersFirst.coop

Want to save money on products and services you use every day just for being a co-op member?

Want to support your local, hometown businesses as well as receive discounts across the country?

Well, you CAN!

Look for this sticker at participating businesses and use your co-op connections card!

If you don't have your Co-op Connections Card ask us for details, or download the app at www.connections.coop



2022 RURAL ELECTRIC *Youth Tour* & *CYCLE*

Trips are a 'go' as Missouri heads for D.C. and Jeff City for the first time since 2019

HIGGINSVILLE, Mo. – After a close competition, featuring top-notch speeches from students around the area, three area high school students are preparing to pack their bags for a week in Washington, D.C.

Jacob Bacus and Caton Brown of Oak Grove High School, and Shayla Joseph of Crest Ridge High School were named winners of the annual Rural Electric Youth Tour competition sponsored by West Central Electric Cooperative, Inc. They will receive an all-expense-paid trip to the nation's capital June 13-19 for the National Rural Electric Youth Tour.

Finalists in the 2022 competition participated in the second round April 6 at West Central Electric Cooperative's headquarters in Higginsville. The students delivered their essays during the oral competition, with the top three winners receiving the trips to the National Rural Electric Youth Tour. The eight finalists were the top students from among the 57 entries.

Following a Youth Tour reception June 13, Missouri's 100-plus-member delegation will travel to Washington, D.C. on June 14. While there, delegates will visit, among other places, the Washington Monument, and the Jefferson, Lincoln, Roosevelt, Vietnam Wall and Korean War memorials. They will get the opportunity to witness the Changing of the Guard Ceremony at the Tomb of the Unknown Soldiers in Arlington National Cemetery, and take an evening dance cruise on the Potomac River. Also on the agenda is Youth Day which is attended by delegates from across the country, and a day on Capitol Hill where students can meet with their senators and representatives.

Five students were named winners of the Cooperative Youth Conference and Leadership Experience (CYCLE) in Jefferson City July 13-15. Students chosen to represent WCE at CYCLE were Aubriana Beeler and Corinne Caldarella of Oak Grove High School, and Brooklyn Correa, Jenna Shanks and Kyla Brandes of Crest Ridge High School.

CYCLE, which is coordinated by the Association of Missouri Electric Cooperatives, has been recognized as the top cooperative youth conference in the nation. During the conference, students will spend a day at the Missouri State Capitol Building, learn about cooperatives, participate in leadership and team-building activities, and hear top-notch speakers. For more information on the Rural Electric Youth Tour or the Cooperative Youth Conference and Leadership Experience, please contact West Central Electric Cooperative.



YOUTH TOUR WINNER
Jacob Bacus



YOUTH TOUR WINNER
Caton Brown



YOUTH TOUR WINNER
Shayla Joseph



2022 CYCLE delegates are (l-r) Kyla Brandes, Jenna Shanks, Corinne Caldarella, Aubrianna Beeler and Brooklyn Correa. They are congratulated by WCE Board President Densil Allen Jr., at far right.

West Central allocates capital credits for 2021

West Central Electric Cooperative's margins have been allocated to each member/owner who purchased electric energy in 2021, according to General Manager Mike Gray.

Because rural electric cooperatives' business structure differs from investor-owned utility companies, the money WCE makes as margins (profits) is returned to the member/owners who use the service, rather than to unknown investors. The money is used as equity in the cooperative, and is returned to the members over time as determined by your board of directors.

West Central Electric tries to balance the system by staying financially strong while also returning the profits to its members over time. Each year, the board of directors decides how this will be accomplished.

You can calculate your own allocation for the year by using the formula in the box below.

The percentage used in the formula was determined by the total margins (profits) of the cooperative, and the total cost paid for our wholesale power in 2021. This year, your allocated amount for 2021 will appear on the bill you received in May.

If you have a non-rural/residential account, any questions regarding how to calculate your allocation, or if you do not know your year-to-date patronage, contact Michael Newland at the Higginsville office at 816-565-4942 or 1-800-491-3803.

Total paid for electricity in 2021
(Beginning with the bill reflecting usage for January 2021 and ending with the bill reflecting usage for December 2021.)

0.136193008293423

2021 allocation
(Applies to rural/residential rate only.)

Example:
\$1,000 total billing for 2021

\$1,000
X
0.136193008293423
\$136.19
2021 allocation

THANK YOU WCE members for funding these second-quarter Round Up grants!

Odessa Little League Football \$1,820

Funds will be used to purchase and install lights at the football practice field to increase safety and productivity for youth teams.



(L-r) Sally Davidson, Candice Bradley, Jessica Porter, Donna Matthews, Brandon Steffen and Dennis Knipmeyer.

University of Missouri Extension for Lafayette & Johnson Co. 4-H \$2,500

Funds will be used to expand the organizations' Virtual Reality Outreach Project by helping them acquire Google Expeditions, a series of virtual reality field trips and tours to places far and wide without having to leave the classroom. Area teachers can access the program for their students.



Front Row (L-R) Mattson Bergsieker, Max Bergsieker. Middle row (l-r) Riley Edmunds, Brock Krewson, Maddy McDowell, Rebekah Papisifakis, Susan Remington, Macie Remington, Mallory Hall. Back row (l-r) Mason Bergsieker, Emily Bergsieker, Dallas Dieckman, WCE Round Up Board member Donna Matthews, Kim Hall and Shelby Bargfrede.



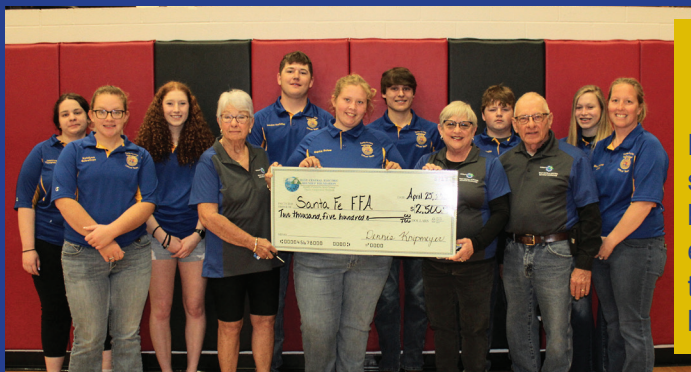
Linda Niendick receives a check for \$5,000 for the Wellington Community Christian Center.

Wellington Community Christian Center
\$5,000
 Funds will be used to build a safe playground that will be used by nearby preschools as well as CCC camps and activities.

Partners for Odessa Parks & Rec.
\$2,000
 Funds will be used to help fund Phase 2 of the group's shade protection project. This phase will provide shade and protection for spectators on both home and visitor bleachers at the softball field and basketball court at Dyer Park.



Front (l-r) Donna Matthews, Sally Davidson, Lisa Waske and Dennis Knipmeyer. Back (l-r) Lindsey Adams, Candice Bradley, Debbie Stevens, Cinda Dowell, Dana Duncan, Brandon Steffen, Ernie Cockrum.



Front row (l-r) Katelynn Schreiman, Round Up member Donna Matthews, Sophia Bolser, Round Up member Sally Davidson, Round Up President Dennis Knipmeyer and FFA Advisor Martha Schreiman Back row (l-r) Jasmine Templeton, Molly Malter, Landon Hostetter, Evan Finkeldei, Gavin Nolte, Atleigh Lark

Santa Fe FFA
\$2,500
 Funds will be used used revive the City of Alma Park Bandstand. The FFA chapter and other community groups use the bandstand during the annual July 4 celebration for various entertainment and other activities. FFA members will provide the labor as a community project, and the Round Up funds will be used for materials.

Immanuel Lutheran School
\$7,000
 Funds will be used to provide secure entrance doors for the school. Two entrances to the school will be fitted with double-pane glass doors, providing increased security as well as energy efficiency for the building.



Back center: Round Up Foundation Board member Sally Davidson presents ILS Principal Tyler Mattlin and Asst. Principal Natasha North with their Round Up grant.

June is recalculation month for co-op level pay plan accounts

Members who are on the cooperative's Level Payment Plan will see their bills recalculated with the billing period ending in June, according to West Central Electric CFO Michael Newland.

"Those new amounts will be reflected on the billing that is due in July," he said. "Those on Billing Cycle 2 (with due dates on the 22nd of the month) will see their new amount in June."

Sign up for Budget Billing...

For West Central Electric Cooperative members who have service in their name and have lived there for one year or more, budget billing can help avoid the peak bills that come with winter heating or summer air conditioning. Here's how Budget Billing works:

- The total of electric usage over the last 12 months is calculated.
- That amount is divided by 12 months to find the average monthly bill with cushion for weather changes.
- The amount due for that amount of kilowatts is rounded, plus a daily service availability charge, and \$9.20 if a security light is at the location. This is the monthly budget amount to be billed.
- Each month a bill is mailed showing actual usage compared to the estimate you pay.
- Your account is reviewed each year and if the energy consumption appears to differ significantly from the budgeted amount, the billing department may contact you to see if you would like to make an adjustment to your account.
- In June of each year, we true up and compare your actual consumption with what was paid. Your new 12-month average is determined and any credit or debit carryover is divided by 12 and added or subtracted for that 12-month average to determine your next year's monthly amount.

To receive full benefit of participation in the Level Payment program, you must make your monthly payment by the normal due date, maintain a good payment record with no returned checks on your account and no more than one trip for collection. Failure to do so may result in removal from the program and could result in a requirement to pay any balance due in full with the next regular monthly billing. For those members who are already on the Level Payment Plan, your new amount will be re-calculated with the billing period ending in June and be reflected on the billing that is due in July. Those members on billing Cycle 2 will see their new amount in June.

To sign up for the Level Payment Plan, or if you have any questions, please contact the billing department at 800-491-3803.

2022 John & Kathryn English Scholars



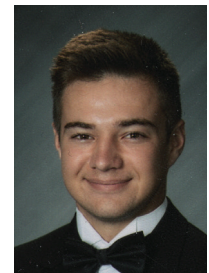
Briana Frerking
4-year, \$1,000 Renewable Winner
(potential \$4,000 award)



Mason Rumsey
One-year Winner
\$1,500



Zach Munsterman
One-year Winner
\$1,500



Kerrick Adkins
One-year Winner
\$1,500

***The John & Kathryn English Memorial Scholarship Trust** was created under the terms of the Last Will & Testament of Kathryn English. The purpose of this trust is to provide scholarship grants for high school graduates who are active 4-H members at the time of their high school graduation and who desire to attend college to pursue a degree. John English, a former director of West Central Electric Cooperative, Inc., designated West Central's Board of Directors as Trustees of the Memorial Scholarship Trust.

Ventilate to beat the heat at home this summer

Your roof can absorb a tremendous amount of heat, especially if you have dark shingles. Without proper ventilation and insulation, your attic temperature could reach 150 degrees! Some of that heat is going to seep into your conditioned space and make your air conditioner work harder.

Properly ventilating your attic can help keep the attic temperature below 110 degrees. Check to see if your home's soffit vents and attic vents are adequate, and if not, add more. The vents and louvers also will prevent moisture buildup.

Window fans are another way to ventilate. The U.S. Department of Energy says to install them in windows facing away from the prevailing wind and exhausting hot air from your

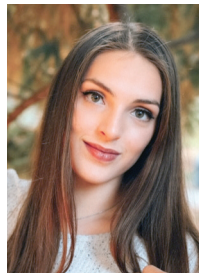
home. To cool as much of your home as possible, tightly close windows near the fan and open windows in rooms far from the fan, preferably on the windward side of your home. Windows near cooler, shaded outdoor areas provide the best intake air.

In multi-level houses, locate the fan on the upper level and the open windows on the lower level. If that's not practical, you may want to independently ventilate each level of your home with separate fans. Depending on the layout of your home, use several window fans working together to pull the air through your home. For instance, fans in several upstairs bedrooms will ensure each bedroom is cooled and will work together to pull air in through the rest of your home.

2022 West Central Electric Cooperative Scholars \$1,300 scholarship winners



Mason Rumsey



Abigail Richner



Luke Othic



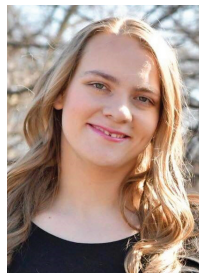
Tyler Ward



Christopher Brunner



Andrew Roth



Savannah Moore



Addison Richards



Emma Lohe



Brady Hinton



Trenton Day



Regan Shaffer



Mattie Nussbaum



Carson Smith



Emilie Forrest

*The **West Central Electric Cooperative Scholarship** is available to students whose parents or legal guardians are current members of the cooperative. The funds are awarded to students graduating high school and planning to attend a college, university or trade or technical school the fall following their graduation.

FROM THE WCE BOARDROOM...

Regular meeting of the Board of Directors held March 24, 2022

The meeting, was called to order by President Densil Allen Jr. Robert Simmons, secretary of the cooperative, caused the minutes of the meeting to be kept. The following directors were present: Allen, Clark Bredehoeft, Simmons, Dale Jarman, Richard Strobel, Stan Rhodes, Sndra Streit, Donald Fore and Jeremy Ahmann. Also present were General Manager Mike Gray, CFO Michael Newland and attorney Sheri Smiley.

APPROVAL OF AGENDA

After discussion, the agenda was approved.

APPROVAL OF CONSENT AGENDA

The board approved its consent agenda consisting of the minutes of the regular meeting of February 24, 2022; expenditures for the month of February 2022; new membership applications and membership terminations.

APPROVAL OF REPORTS

The following february reports were approved:

Financing and Treasurer's Report: Newland presented the February 2022 Operating Report (RUS Form 7) and Comparative Operating Statement. He reviewed the Financial and Statistical Report and Treasurer's Report with monthly and annual budget comparisons. He also gave the investment report. He presented and reviewed statistical data pertaining to operating revenue, expenses, margins, assets, liabilities, cash flow management, and KWH sales and ratios. Deferred revenue was discussed. RUS has approved the revenue deferral of 2021 of \$750,000. A discussion was held regarding a potential bylaw change for 2022 that only a notification will be published in the newspapers that provides a link to the Cooperative's web site for unclaimed capital credits. The motion passed to present the bylaw for the membership to vote on. Smiley will bring back final language at the next meeting for approval.

Capital Credit Retirement-- Newland presented recommended capital credit retirements. His recommendation was to retire 100% of 2001, 100% of 2002 and 75% for 2003 for a total retirement of \$1,511,905.15. Motion passed as presented.

Operations Report: Operations Manager Randy Burkeybile introduced District Operations Supervisor Scott Gard who provided updates on: crews, outages for the month, a mechanic's report, and updates on brush crews and right-of-way. A report on replacement porcelain cut outs was also provided.

Safety and Engineering Report: Engineering Manager Pete Nelson provided updates on: safety meetings, crew visits, and gave an engineer/staking department report. He reported on the number of employee hours worked and number of miles driven with no accidents. He discussed the impact of the increases in costs of materials and new loads.

Member Services Report: Member Services manager Brent Schlotzhauer reported on: Operation Round Up, Youth Tour, scholarship applications and the employee award banquet that was held. The Triennial survey results were also discussed. Solar systems and rebates given were also reported on as well as chamber meetings attended. He reported that Rural Missouri magazine addresses are being reviewed for clean up.



NW REPORT

Simmons reported on the N.W. Electric board meeting held March 14. He reported on patronage capital that was allocated, the presentation that was given on fiber to substations and annual meeting plans.

NOMINATING COMMITTEE

The following names were given for the nominating committee: Adam Heater, Paul Nolte, Stephanie Othic, Jeremy Sanders, William Grauberger, George Scott, Lana Tieman, Verna Jenkins and Virginia Haller.

NRECA ANNUAL MEETING REPORT

The Directors who attended the meeting discussed their attendance and the topics discussed including bylaws, board room challenges, green energy and a report of a futurist.

STRATEGIC ACTION PLAN

Gray provided the summary from CFC of the board retreat. He had gone over the plan prior to the meeting with staff. An action plan was developed and presented to the board. It was recommended that the Bylaw and Policy Committee will meet to decide if they want to review policies and bylaws on an annual or monthly basis. The plan was adopted as presented.

LEGAL REPORT

Smiley presented a report on legal matters.

MANAGER'S REPORT

Gray presented the monthly Manager's Report. He reported the ceiling leaks revealed a roof needs to be replaced and a discussion was held on whether the whole building should be done or just the area above the meeting room. The board approved replacing the meeting room roof at a cost not to exceed \$60,000.00, and to amend the capital budget accordingly. He also provided the board with the results of the Triennial survey in their board packet.

UNFINISHED BUSINESS

A discussion was held on generators.

NEW BUSINESS

Jarmann reported there were 16 scholarship applications received. The board's consensus was that the scholarship committee could decide how to allocate the funds to the applicants.

ADJOURNMENT

Meeting adjourned.

FINANCIAL REPORT • Statement of Operations • February 2022

	This month	YTD 2022	YTD 2021
Revenue	\$3,327,097	\$6,641,557	\$6,294,142
Power Bill Expense	1,731,999	3,630,254	3,486,923
Operation & Maint. Expense	627,103	1,131,863	1,081,773
Depreciation Expense	208,166	415,929	397,160
Interest Expense	103,430	217,353	220,251
Total cost of Srvc. (Total Expense)	2,670,698	5,395,399	5,186,107
Operating Margins (Revenue less Expenses)	656,399	1,246,158	1,108,035
Other Margins	8,622	16,179	12,344
TOTAL MARGINS	\$665,021	\$1,262,337	\$1,120,379

